



Naval Facilities Engineering Command, Pacific
 258 Makalapa Drive, Suite 100
 JBPHH, Hawaii 96860-3134

**MILITARY RELOCATION TO GUAM AND CNMI
 PROGRAMMATIC AGREEMENT (PA) MEMO #1**

Project: J-001B Finegayan Forest Enhancement Ungulate Fencing	Date: December 30, 2015
Project Location: Naval Base Guam Telecommunications Site (NBGTS)	Prepared By: NAVFAC Pacific

PROJECT SUMMARY

This project proposes construction of ungulate fencing (hooved animals) in an area planned for forest enhancement of the northern portion of Naval Base Guam, Telecommunications Site (NBGTS) and a southwestern portion of Northwest Field on Andersen Air Force Base (AAFB) in Dededo, Guam. Although located within what is today known as the village of Dededo, the pre-World War II names for the areas within or closest to the area of potential effects (APE) include Ukudu, Ritidian, Fafalog, Haputo, and Finaguayac. This area was selected for the Marine cantonment and Family Housing as identified in Alternative E.

The requirement for this forest enhancement is stated in the Record of Decision (ROD) (signed August 28, 2015) on the Final Supplemental Environmental Impact Statement (FSEIS) (July 9, 2015). In the section “Mitigation Measures for Impacts Associated with the Cantonment/Family Housing Alternative E” on page 18 the forest enhancement ungulate control is described to occur on a minimum of 780 acres (316 hectares (ha)) of limestone forest. This section of the fencing will construct an ungulate control fence that encloses approximately 400 acres of limestone forest north of the Marine Corps main cantonment at NBGTS Finegayan. The total ungulate control area at NBGTS is expected to cover approximately 1,815 acres (734.5 ha). Stipulation IV.F of the 2011 Programmatic Agreement (PA) among the Department of Defense, the Advisory Council on Historic Preservation, the Guam State Historic Preservation Officer, and the Commonwealth of the Northern Mariana Islands State Historic Preservation Officer Regarding the Military Relocation to the Islands of Guam and Tinian (the Undertaking) provides for solicitation, discussion, and review of additional information or when project areas change to incorporate previously unsurveyed areas or when new project areas are introduced. Accordingly, this memo presents information to allow the State Historic Preservation Officer (SHPO) to provide comments on the DoD’s identification and evaluation of historic properties within the project’s APE, as well as the DoD’s determination of effect.

1 The posting of this PA Memo on the Cultural Resources Information (CRI) website is required by Stipulation IV.E.2. of the 2011 Military Relocation PA as a means for interested members of the public to provide comments on the identification and evaluation of historic properties. Confidentiality requirements under the Archaeological Resources Protection Act (ARPA) and National Historic Preservation Act (NHPA) prohibit federal agencies from publicly disclosing the exact nature and location of archaeological sites and other types of historic properties such as traditional cultural properties (TCPs).

PROJECT LOCATION

The project APE for Government of Japan-funded (Mamizu) project J-001B to erect forest enhancement ungulate fencing is an approximately 8 meter (26.25 feet) wide corridor for clearing (not grubbing, which pulls up roots and disturbs the soil) along a length of approximately 4,000 meters (2.5 miles) through secondary limestone forest (Figure 1). Fence posts will be installed approximately 2 meters (6.5 feet) apart (depending on terrain), and to a depth of 0.6 meter (2 feet) minimum. The limestone bedrock is frequently encountered within 30 cm (11 inches) depth in this area. The project area is situated on the limestone plateau above the western cliffs of northern Guam. The plateau, which rises from 120 to 150 meters (400 to 500 feet) above mean sea level is relatively flat, although there are localized raised and depressed areas caused by differential solution of the limestone bedrock below the soil layer. Depressed areas may collect some soil, while raised areas of bedrock would be exposed on the surface.

The total APE for J-001B forest enhancement ungulate fencing is a corridor 4 kilometers (2.5 miles) long. There is a buffer of approximately 33 feet on each side of the fence line that will potentially be cleared for the construction/equipment necessary for erecting the fence. This gives an approximate acreage of 30.3 acres (12.26 hectares), however this is with a very wide buffer, and it must be noted that this will in actuality be far narrower, since it is just a fence line. The wide buffer is to allow for field changes to avoid munitions and explosives of concern/unexploded ordnance (MEC/UXO), cultural materials, and sensitive vegetation (endangered or culturally significant plants). The forest enhancement fence intersects with perimeter fencing that was previously-consulted upon under J-001B for a fully-enclosed area.

PROJECT DESCRIPTION

J-001B Forest Enhancement fencing crosses from Route 3A to the western cliff line in the area of AAFB referred to as Northwest Field, and lies north of NBGTS and the proposed Alternative E Main Cantonment area.

Prior to installation of the fence line, clearing of vegetation will facilitate access to the project site. Since there will be excavation for each fence post, MEC clearance support will be required.

IDENTIFICATION OF HISTORIC PROPERTIES

Scope of DoD Identification Efforts

In planning for the Undertaking, the Department of Defense (DoD) first conducted a data gap analysis to determine the need for supplemental identification and evaluation surveys and then conducted those surveys. Surveys were available for review by the Guam SHPO, Advisory Council on Historic Preservation (ACHP), National Park Service (NPS) and Concurring Parties to the 2011 Programmatic Agreement (2011 PA). DoD has applied the results of those survey identification efforts to the siting/lay down of this fencing to avoid and minimize effects to historic properties to the extent practical. DoD has provided documentation of these efforts to the Signatories and Invited

- 2 | The posting of this PA Memo on the Cultural Resources Information (CRI) website is required by Stipulation IV.E.2. of the 2011 Military Relocation PA as a means for interested members of the public to provide comments on the identification and evaluation of historic properties. Confidentiality requirements under the Archaeological Resources Protection Act (ARPA) and National Historic Preservation Act (NHPA) prohibit federal agencies from publicly disclosing the exact nature and location of archaeological sites and other types of historic properties such as traditional cultural properties (TCPs).

Signatories via Appendices D and E of the 2011 PA.

DoD surveys and evaluations have focused on project-specific APEs, defined consistent with 36 CFR §800.16(d) to include those portions of the island of Guam and Tinian subject to direct and indirect effects of projects included in the Undertaking, based on the July 2010 Final Environmental Impact Statement (FEIS) for the Guam and CNMI Military Relocation.

In addition to the archaeological and architectural surveys and evaluations, DoD has completed extensive archival research and oral history studies and interviews to identify traditional cultural properties, places, sacred sites, and culturally important natural resources such as the *nunu*, *da'ok*, *dokdok*, and *ifit* trees, and medicinal plants.

More specifically, the J-001B forest enhancement ungulate fencing APE has been subject to one or more of the historic property identification efforts listed in 36 CFR §800.4(b)(1), which may include background research, consultation, oral history interviews, sample field investigation and field survey. As such, results of identification and evaluation efforts for the J-001B forest enhancement ungulate fencing APE can be found in the following original studies of cultural and/or historic resources.

Athens, J.S.

2009 *Final Archaeological Surveys and Cultural Resources Studies on Guam and the Commonwealth of the Northern Mariana Islands in Support of the Joint Guam Build-Up Environmental Impact Statement Volume I: Guam*. Prepared by International Archaeological Research Institute, Inc. Honolulu, HI.

Dixon, Boyd, S. Walker and R. Schaefer

2011 *Final Report Cultural Resource Investigations Conducted in the Territory of Guam Supporting the Joint Guam Build-Up Environmental Impact Statement: Final Archaeological Surveys on Guam 2010 on Andersen AFB*. Prepared by the Naval Facilities Engineering Command, Pacific Division, by TEC Inc.

Haun, Alan E.

1988 *Archaeological Reconnaissance Survey and Field Inspections of Relocatable Over-the-Horizon Radar Sites on Guam, Mariana Islands, Micronesia*. Prepared for Wilson Okamoto and Associates, Inc., Paul H. Rosendahl, Ph.D., Inc. Hilo, HI.

Highness, D. and Alan E. Haun

1990 *Archaeological Inventory Survey DTS Facility: Barrigada and Finegayan Sites, Dededo and 3 Barrigada Municipalities Territory of Guam*. Prepared for Belt Collins by Paul H. Rosendahl, Ph.D., Inc., Hilo.

-
- 3** The posting of this PA Memo on the Cultural Resources Information (CRI) website is required by Stipulation IV.E.2. of the 2011 Military Relocation PA as a means for interested members of the public to provide comments on the identification and evaluation of historic properties. Confidentiality requirements under the Archaeological Resources Protection Act (ARPA) and National Historic Preservation Act (NHPA) prohibit federal agencies from publicly disclosing the exact nature and location of archaeological sites and other types of historic properties such as traditional cultural properties (TCPs).

Kurashina, H., T. McGrath and H. Manner

1987 *Archaeological Survey of Areas 1, 2, 1A, and 2A at Northwest Field, Andersen Air Force Base and Naval Communication Area Master Station Western Pacific, Finegayan, Guam, Mariana Islands*. Prepared for Department of Navy, Pacific Division, Naval Facilities Engineering Command. University of Guam, Mangilao, Guam and Bernice P. Bishop Museum, Honolulu, HI.

Kurashina, H., D. Wooster, T. McGrath, and J. Toenjes

1988 *Archaeological Investigations of the Route 3 Road Corridor, Territory of Guam, Mariana Islands*. Prepared for Juan C. Tenorio and Associates, Inc., Agana, Guam.

Olmo, Richard K., T. Mangieri, D. Welch, and T.S. Dye

2000 *Final Phase II Archaeological Survey and Detailed Recording at Commander, U.S. Naval Forces Marianas (COMNAVMARIANAS) Communications Annex (Formerly Naval Computer and Telecommunications Area Master Station, Western Pacific [NCTAMS WESTPAC]), Territory of Guam, Mariana Islands*. Prepared for the Department of the Navy, Pacific Division, Naval Facilities Engineering Command, Building 258 Makalapa Drive, Pearl Harbor, Hawaii under contract N62742-97-D-3511 to International Archaeological Research Institute, Inc.

Reinman, F.

1977 *An Archaeological Survey and Preliminary Test Excavations on the Island of Guam, Mariana 6 Islands, 1965-1966*. Miscellaneous Publications No.1. Micronesian Area Research Center, University of Guam, Mangilao.

Welch, D.

2010 *Final Archaeological Surveys and Cultural Resources Studies Conducted in 2007 on the Island of Guam in Support of the Joint Guam Build-Up Environmental Impact Statement; Volume I: Narrative and Volume II: Site Descriptions*. Prepared for Department of the Navy, Naval Facilities Engineering Command, Pacific, Pearl Harbor, Hawaii under Contract N62742-06-D-1870, Task Order 10 to TEC, Inc.

Results of the above studies indicate an absence of historic properties within the J-001B forest enhancement ungulate fencing APE, as presented here (the route having been carefully placed to avoid contacting the recorded surface sites).

DETERMINATION OF ELIGIBILITY:

Pending input from consulting parties and the public, the DoD has determined there are no known cultural resources within the J-001B forest enhancement ungulate fencing APE that are eligible for listing in the National Register of Historic Places.

DETERMINATION OF EFFECT:

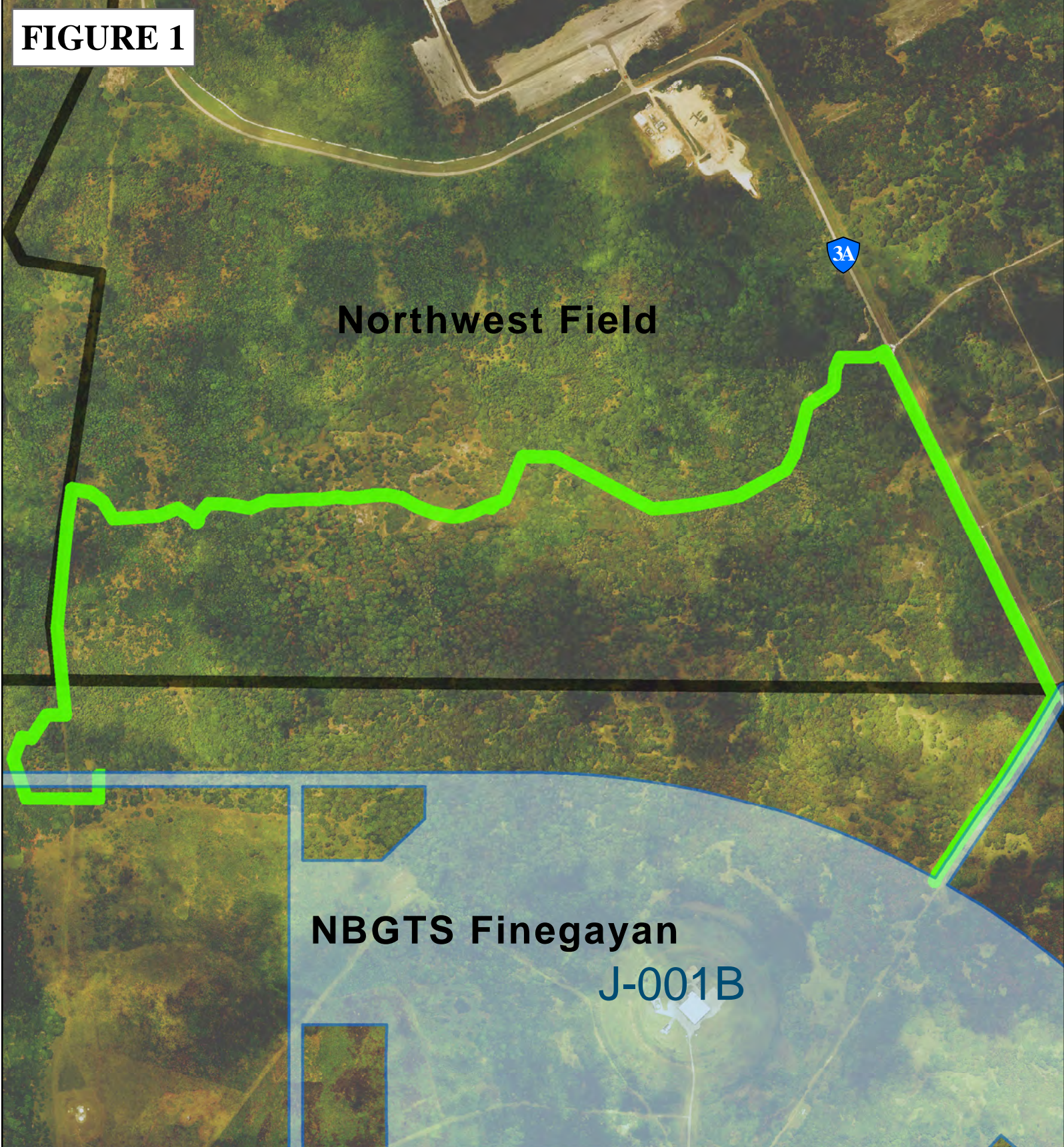
The DoD's determination of effect for J-001B forest enhancement ungulate fencing is no historic

- 4 | The posting of this PA Memo on the Cultural Resources Information (CRI) website is required by Stipulation IV.E.2. of the 2011 Military Relocation PA as a means for interested members of the public to provide comments on the identification and evaluation of historic properties. Confidentiality requirements under the Archaeological Resources Protection Act (ARPA) and National Historic Preservation Act (NHPA) prohibit federal agencies from publicly disclosing the exact nature and location of archaeological sites and other types of historic properties such as traditional cultural properties (TCPs).

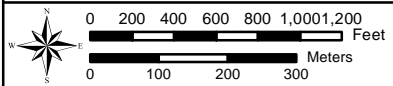
properties affected.

-
- 5** | The posting of this PA Memo on the Cultural Resources Information (CRI) website is required by Stipulation IV.E.2. of the 2011 Military Relocation PA as a means for interested members of the public to provide comments on the identification and evaluation of historic properties. Confidentiality requirements under the Archaeological Resources Protection Act (ARPA) and National Historic Preservation Act (NHPA) prohibit federal agencies from publicly disclosing the exact nature and location of archaeological sites and other types of historic properties such as traditional cultural properties (TCPs).

FIGURE 1





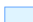
**Forest Enhancement Fence
Figure - 1**



PREPARED BY:
Naval Facilities Engineering Command Pacific
Date: 12/3/2015



Coordinate System: UTM Zone 55 North
Projection: Transverse Mercator
Datum: D WGS 84

-  DoD Property
-  Forest Enhancement Fence Area
-  J-001B PA Memo Area

Forest Enhancement Fence = 14,656 ft.
Fence Construction Area = 30.3 Acres

